

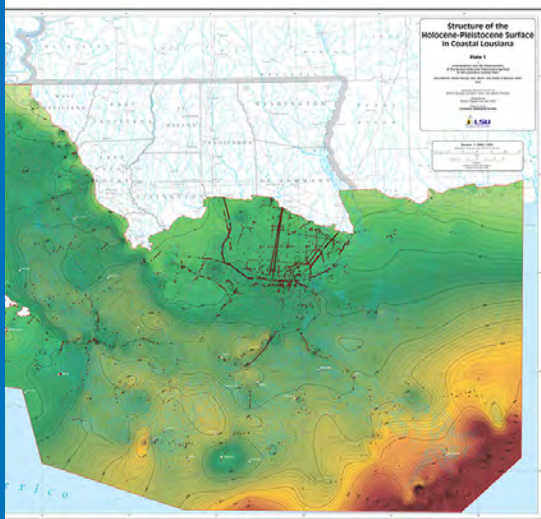


Louisiana Geological Survey

July 26, 2017

9:00 am

Dalton J. Woods Auditorium
Energy, Coast and Environment Bldg
Louisiana State University



LOUISIANA COASTAL GEOLOGY FRAMEWORK SYMPOSIUM: A WIDE-RANGING DISCUSSION OF COASTAL LOUISIANA'S GEOLOGICAL FRAMEWORK, FEATURING SOME NEW INTERPRETATIONS

Featured speakers:

Nancye Dawers
Woody Gagliano
Jeff Hanor
John Johnston III
Rick McCulloh
Elizabeth McDade
Chris McLindon

Moderators:

John Johnston III
Elizabeth McDade
Amanda Jo Zimmermann

We are currently looking for posters!

For more information, or to submit abstracts or posters, please contact symposium chairman John Johnston III at hammer@lsu.edu.
Abstracts are due by July 15, 2017.

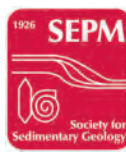
There is a \$15 parking fee for attendees (LSU faculty, staff, students, and retirees have already paid for parking).

No food or drink will be provided.

Continuing Education Hours: Professional development is required to maintain the Louisiana PG License. One continuing education hour will be available for every hour of talks attended. Additionally, there will be a talk designed to satisfy the annual ethics requirement of the Louisiana PG License. Licensees must keep a list of talks attended.

You must RSVP by July 24 to John Johnston III at hammer@lsu.edu in order to attend.

Cosponsors



LSU | Center for Energy Studies

LSU | College of Science
Department of Geology & Geophysics

LSU | DEPARTMENT OF OCEANOGRAPHY & COASTAL SCIENCES