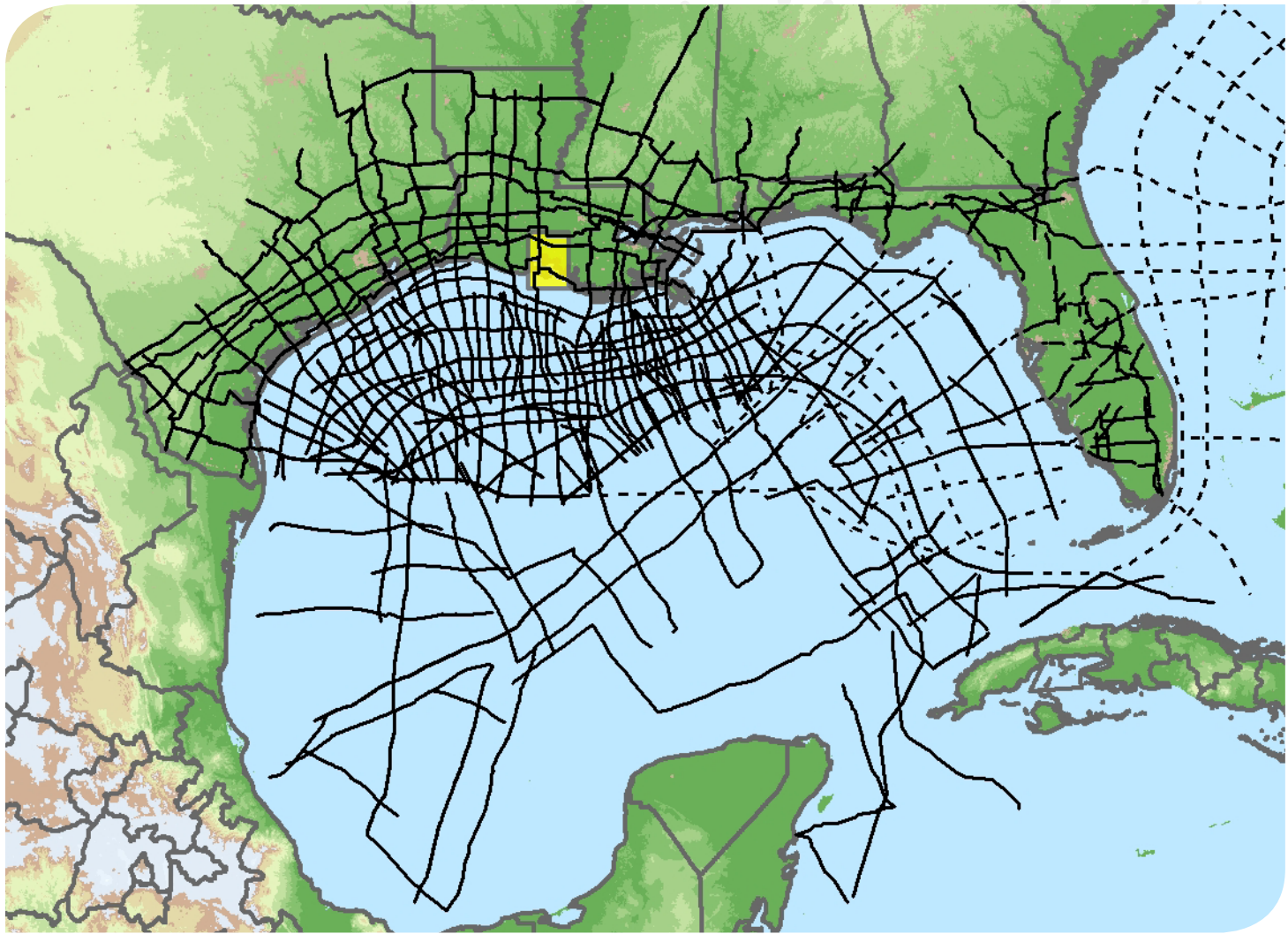


# Explore the Entire Gulf of Mexico



Position your company for the next 10 years of exploration with the most complete, modern time and depth-imaged data in the Gulf of Mexico. ION's interconnected dataset links the entire Gulf, from onshore to offshore deep water, from Texas to Florida and to Mexico. With over 40,000 miles (over 65,000 km) completed or in progress, and an additional 7,500 miles (over 12,000 km) planned for 2013 and beyond, no other data library provides as comprehensive a framework for understanding the Gulf of Mexico. To learn more, visit [iongeo.com/Gulf\\_of\\_Mexico](http://iongeo.com/Gulf_of_Mexico)

## CONTACT

Ashley Garcia  
Mobile: +1 281 781 1005  
Email: [ashley.garcia@iongeo.com](mailto:ashley.garcia@iongeo.com)

Alvin Rowbatham  
Mobile: +1 832 372 2366  
Email: [alvin.rowbatham@iongeo.com](mailto:alvin.rowbatham@iongeo.com)

## AREAS OF EXPERTISE

Unconventional Reservoirs  
Challenging Environments  
Complex Geologies  
→ **Basin Exploration**  
Reservoir Exploitation



GEOVENTURES®